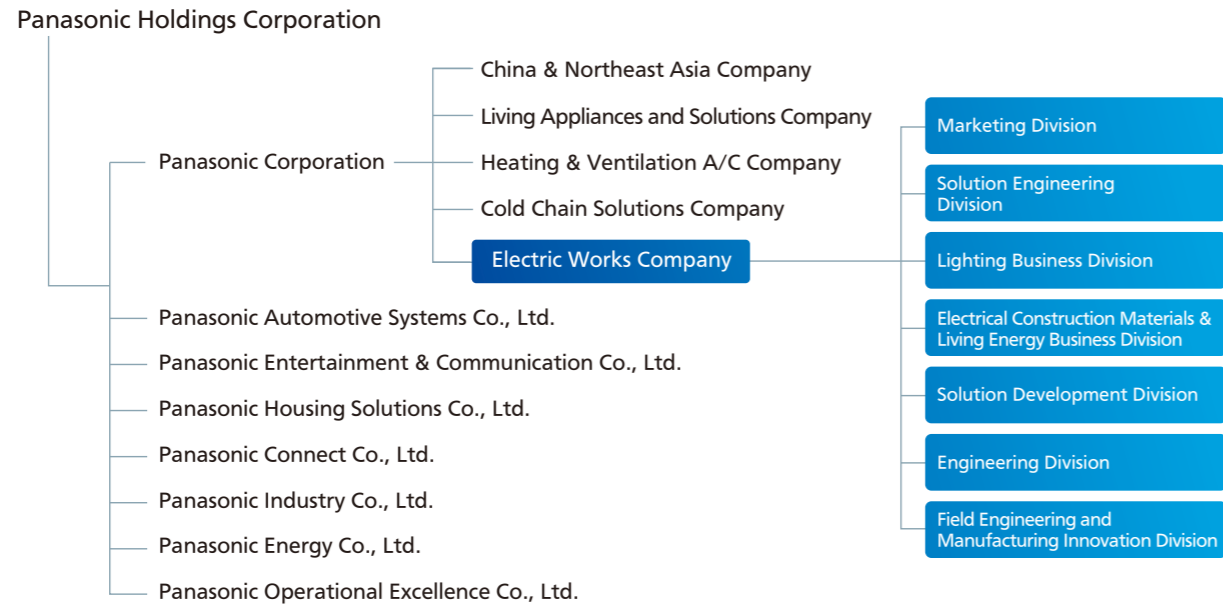


## ORGANIZATION CHART



# Electric Works Company

Electric Works Company  
Panasonic Corporation



Panasonic Shiodome Museum of Art | ROUAULT GALLERY

## Panasonic Shiodome Museum of Art

Enjoy encounters with art  
that feel new, deep, and inspiring

Panasonic Shiodome Museum of Art opened in April 2003 as a part of the social contribution projects of Panasonic and celebrated its 20th anniversary in 2023.

The Museum is home to a collection of almost 260 works by French artist Georges Rouault (1871-1958), which include paintings and some of his best-known prints from every stage of his career. These works are displayed either in our permanent Rouault Gallery or in themed exhibitions that relate directly or indirectly with Rouault.

The Museum also presents exhibits on themes such as "architecture and living spaces" and "design and applied arts." The exhibitions are designed to enrich both the minds and lives of those who come to visit.

In the future, the gallery will continue to contribute to the inheritance and development of culture and art and aim to continue evolving into an art museum that can deliver to everyone even more dreams and inspiration.



The Magnificent Works of Georges Rouault: Sacred Art and Modernity (2018)



Eliel Saarinen and His Beautiful Architecture in Finland (2021)



Forms for Fragrance: Treasures from the Takasago Collection (2021)

# Brightening Today. Powering the Future.

Our planet faces a turning point.  
At Panasonic, we are determined to play our role  
in helping foster a better society by providing electrical equipment  
that lays the foundation for people's lives.

## Creating a safer and more secure society with electrical equipment

For 100 years, we have designed, developed, and distributed  
electrical equipment that supports people, communities, and societies.

Delivering high-quality products and intelligent technologies  
that provide safety and comfort every day,  
as well as peace of mind at times of emergency, to every corner of the world.

## Contribution to decarbonization with electrical equipment

From individual homes to international stadiums,  
commercial facilities to airports, train stations, and national landmarks –  
our technology is transforming communities worldwide.

Through smart energy management and advanced technologies,  
we are reducing CO<sub>2</sub> emissions and preserving the environment.

We are committed to building a brighter future  
while supporting comfortable lifestyles for the present day.

## Supporting next-generation workstyles with electrical equipment

Remote working. Hybrid working. Virtual conferences.  
Work styles have been changing dramatically.

Using sensing and digital technology,  
we are designing optimal spaces that provide comfortable environments  
that aren't just offering a place to work  
but a new way to work that focuses on wellness –  
whether that's at home, at the office, or in other shared spaces.

And beyond the home, beyond the community –  
we respond to issues across the globe,  
providing cutting-edge technology that cares for people and their varying lifestyles.  
Supporting an infrastructure for life – that is Panasonic's DNA.

We promise not to compromise today for the future.  
We promise not to compromise the future for today.  
At Panasonic, we promise to bring both a better today and a better future.



## Message from the President

The Electric Works Company is in the business of  
providing innovative, people-centered electrical equipment  
for all of society's "life spaces," from homes, offices and hotels  
to commercial and sports facilities.

With solutions centered around digital technology and  
electrical equipment, we provide safe and comfortable spaces  
where everyone can live healthy and active lives.

We offer new ways to improve spaces, adapting to changes  
in lifestyles and the social environment to deliver the  
maximum satisfaction to customers.

Based on these aims, we work with leading partners  
to offer people-centered solutions.

We are in the business of bringing customers  
a better today and a better tomorrow  
through electrical equipment.

*Kiyoshi Itaki*

President  
Electric Works Company  
Panasonic Corporation



# Lighting Business Division



Outdoor lighting: As an official eco partner of Hanshin Koshien Stadium, Panasonic is working to reduce CO2 emissions with LED lighting.

## Lighting Business

We respond to the diversifying needs of customers for their residences, offices, and other facilities and realize both Enriches the Heart and an ecological balance with the power of lighting. We will further pursue energy savings, longer life spans, durability, designability, and other aspects of lighting performance and provide a rich life that is more comfortable and safer while being a close partner for people.

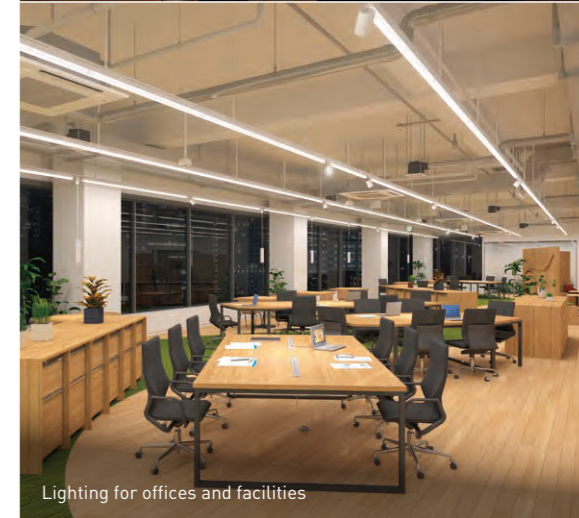


LED Base Luminaire  
iD Series

LED Flat lamp



Lighting for residential use



Lighting for offices and facilities



Lighting for shops



Spatial presentations with light, images, and sound

Electrical Construction  
Materials &  
Living Energy  
Business Division



Wiring Devices - S0-STYLE series

## Electrical Construction Materials Business

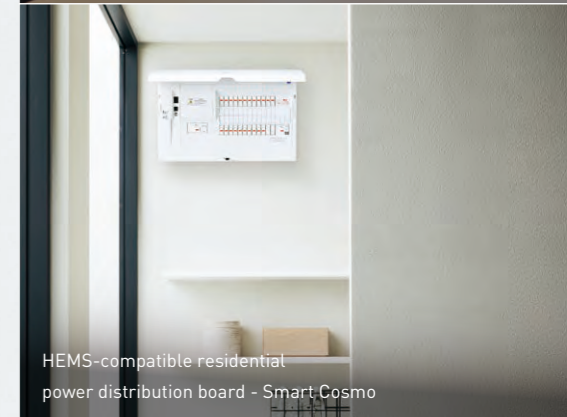
Since our foundation, we have been a close partner in people's lives and supported safe and secure lives. In the future, we will continue to contribute to comfortable and sustainable life using IoT and equipment control, in addition to safety and security, through a wide range of power distribution and information infrastructure, including wiring devices, power distribution boards, conduit pipes, apartment intercom systems, and home systems.



Wiring devices  
ADVANCE SERIES  
LINK PLUS  
\*The image is for illustrative purposes only.



Home IoT - AISEG



HEMS-compatible residential  
power distribution board - Smart Cosmo



Apartment intercom system - Clouge



Wiring duct for DC power supply - DC Line



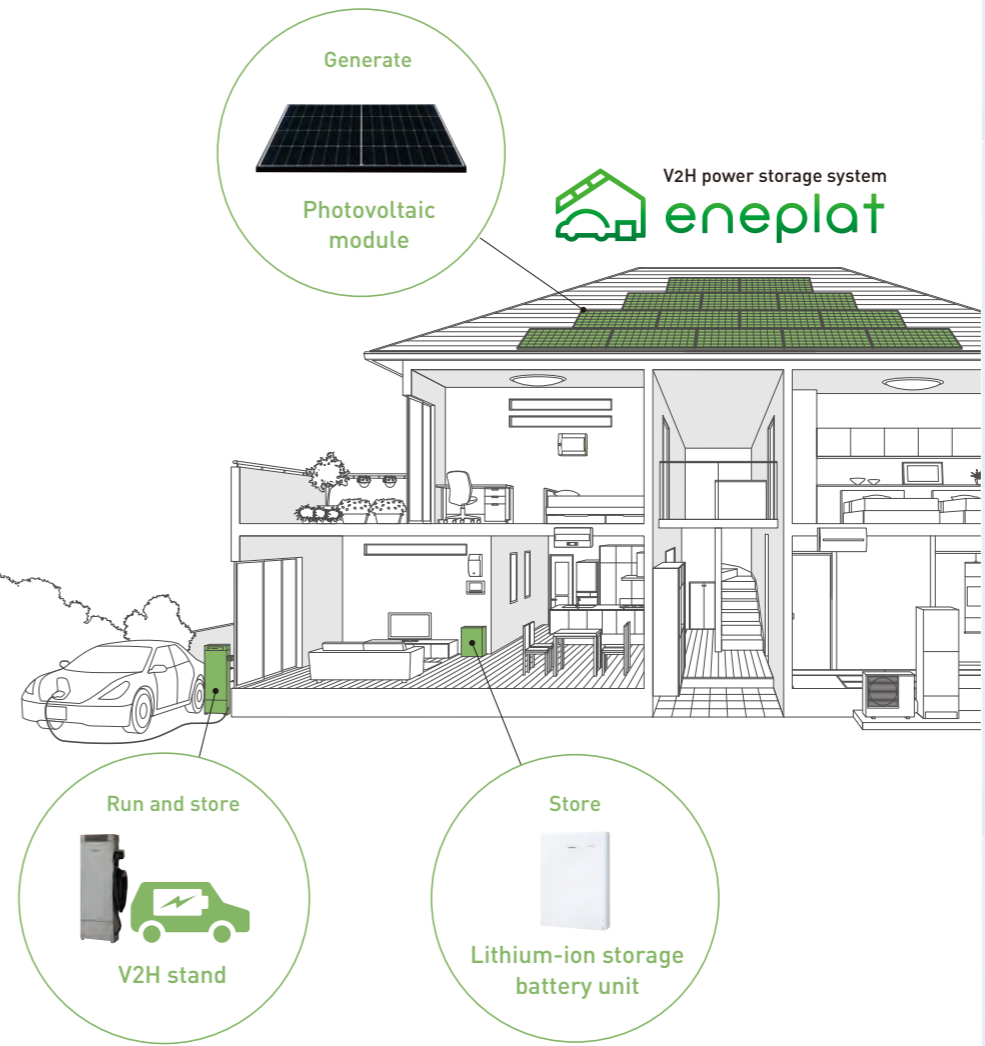
Power tools - EXENA



H2 KIBOU FIELD

## Sustainable Energy Business

With the best mix of energy products related to gas, hydrogen, and electricity and effective utilization of them, we will achieve both the realization of a decarbonized society and a comfortable life and contribute to a sustainable society.



Residential Fuel Cell CHP ENE-FARM



Pure hydrogen fuel cell systems



Ultrasonic measurement unit



Wireless Device



Ultrasonic Flow & Concentration Sensor for Hydrogen



Power conditioner

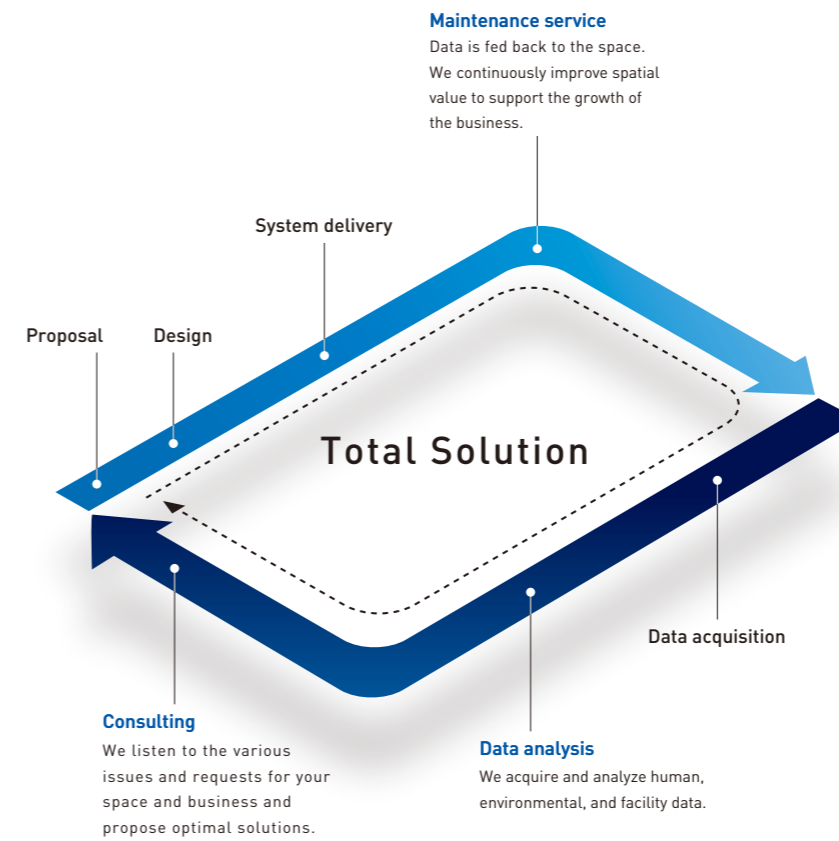
Solution Engineering  
Division



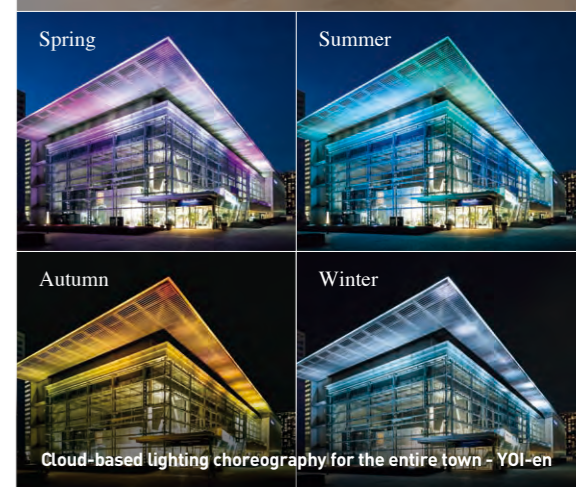
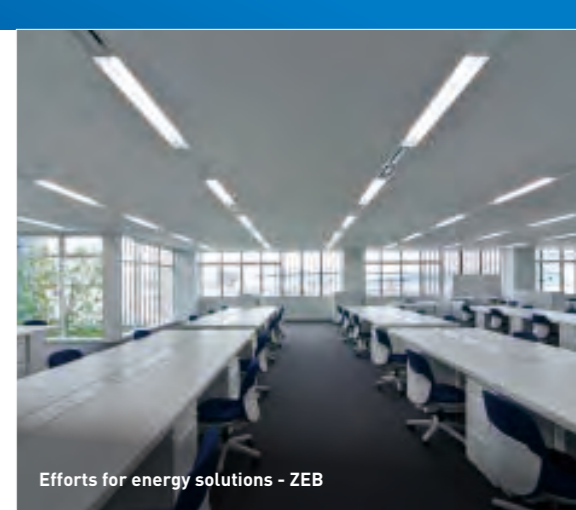
worXlab

## Solution Engineering Business

We are committed to creating long-term solutions that realize well-being, environmental friendliness, and resilience by connecting hardware systems, service consulting, and engineering with the aim of providing comprehensive business solutions tailored to the needs of each customer.



We provide not only equipment but also total solutions including consulting, analyses of usage data, and operational improvements.



# Manufacturing Bases and Major Delivery Examples in Japan

4 factories, 76 offices, and 36 affiliated companies in Japan \*As of February 2023

Factories: 4 factories (Niigata, Tsu, Kusatsu, Nara)

Offices: 76 offices

Affiliated companies in Japan: 13 manufacturing companies, 23 sales and other companies

■ Factory    ● Major delivery example



## Lighting Business Division



## Electrical Construction Materials & Living Energy Business Division



# Sold in 109 countries and regions around the world, with 16 affiliated companies

Japan (non-consolidated) 8,000 people

Japan (consolidated) 10,000 people

Overseas (consolidated) 11,000 people

Total number of employees \*As of December 2022

# 29,000 people



Turkey

We provide electrical equipment products that meet the needs of each country in Europe, the CIS, the Middle East, Africa, and other regions. We are expanding business with two brands: Panasonic and ViKO.



India

We conduct business with a wide range of products, such as wiring devices, breakers, lighting, ceiling fans, and kitchens. We are expanding business with two brands: Panasonic and ANCHOR.

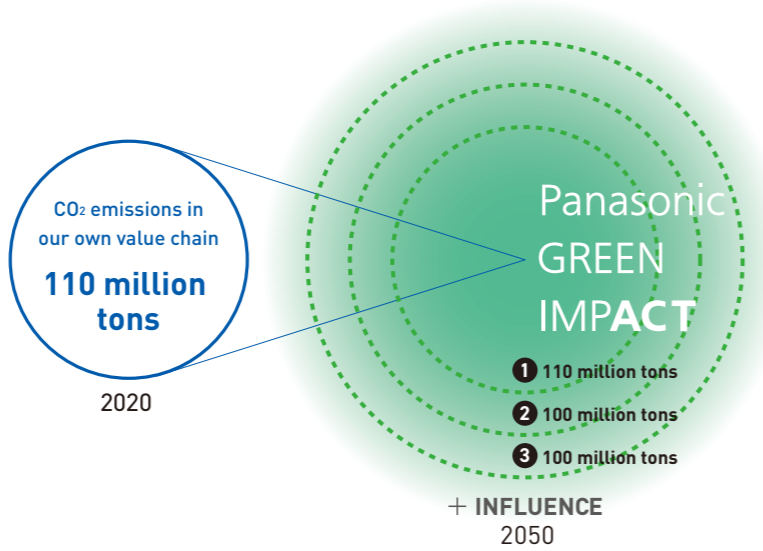


Vietnam

As a comprehensive electronic materials provider, we provide electrical construction materials that meet the market needs in Vietnam. In 2023, a new factory for wiring devices and breakers will start operating.

# Panasonic GREEN IMPACT

Panasonic Group aims to achieve carbon neutrality together with society to realize both a better life and sustainable global environment by expanding the impacts of our various activities.



<p><b>1</b></p> <p><b>OWN IMPACT</b></p> <p>Impact of emissions reductions in our own value chain</p>	<p><b>2</b></p> <p><b>CONTRIBUTION IMPACT</b></p> <p>Impact on society of the contribution of existing business to the reduction of emissions</p>	<p><b>3</b></p> <p><b>FUTURE IMPACT</b></p> <p>Impact on society of the contribution of new business/new technology to the reduction of emissions</p>
---	---	---



With pure hydrogen fuel cell integrated control, we will cover the energy consumed in business activities with 100% renewable energy.

Electric Works Company will continue to reduce CO<sub>2</sub> emissions through the conservation and management of energy for electric equipment. In addition, it will contribute to the realization of a carbon neutral society with 3-battery (Solar Systems, storage battery, fuel cell) linkage technology.



We aim to achieve zero CO<sub>2</sub> emissions in all our factories around the world by 2030.

Toward the achievement of our environmental goals in 2050, we are aiming for zero CO<sub>2</sub> emissions in all our factories around the world by 2030. Before that, Lighting Business Division Niigata Factory (Tsubame City, Niigata Prefecture) is aiming to reach net zero by FY2028 through energy conservation, the introduction of renewable energy, and other measures.

# History of Electric Works Company

1918 - The history of Panasonic started with one wiring device (attachment plug). We would like to introduce the history of Electric Works Company, which extends more than 100 years to the present day.

1918	Konosuke Matsushita established Matsushita Electric Housewares Manufacturing Works. Started production and sale of wiring devices.
1935	Spun off Matsushita Electric Corporation. Produced and sold wiring devices, synthetic resins, and conduit tubes.
1945	Change the company name to Matsushita Electric Works Co., Ltd.
1978	Started joint development of a gas microcomputer meter after a meeting between our founder, Konosuke Matsushita, and top management of a leading gas company.
1987	Established a conduit manufacturing company, Thai Matsushita Electric Works Steel Co., Ltd. (presently Panasonic Electric Works Steel Thailand Co., Ltd.), in Thailand.
1990	Established a sales company, Asia Pacific Matsushita Electric Works, Ltd. (presently Panasonic Electric Works Asia Pacific Pte. Ltd.), in Singapore.
2001	Launched the Fuel Cell Commercialization Project.
2004	Matsushita Electric Industrial Co., Ltd. (presently Panasonic Holdings Corporation) became the parent company of Matsushita Electric Works Co., Ltd.
2007	Acquired Anchor Electricals Pvt. Ltd., which would be the base for our information equipment business in India.
2008	Changed the company name to Panasonic Electric Works Co., Ltd. Unified the name under the Panasonic brand.
2009	Started mass production of the ENE-FARM, the world's first residential fuel cell, in Kusatsu Factory.
2010	Jointly developed a residential fuel cell system for the European market with Viessmann Group.
2011	Became a wholly owned subsidiary of Panasonic Corporation (presently Panasonic Holdings Corporation). SANYO Electric Co., Ltd. became a wholly owned subsidiary of Panasonic Corporation (presently Panasonic Holdings Corporation).
2012	Established an internal company, Eco Solutions Company.
2014	Acquired ViKO, a manufacturer of wiring devices in the Republic of Turkey.
2016	Transferred the solar division of SANYO Electric Co., Ltd. under the umbrella of Eco Solutions Company.
2017	ViKO changed its name to Panasonic Eco Solutions Turkey.
2019	Anchor Electricals Pvt. Ltd. changed its name to Panasonic Life Solutions India Pvt Ltd.
2021	Established Electric Works Company as an internal corporate spin-off of Panasonic Corporation (presently Panasonic Holdings Corporation).
2022	Migrated to an operating company system. Became a spin-off within the operating company that inherited the trade name Panasonic Corporation.