

Panasonic

Electric Works Company

Electric Works Company
Panasonic Corporation

2025

Brightening Today. Powering the Future.

Even as times change,
we at Panasonic remain steadfast in our vision:

A world where everyone is healthy in both body and mind. — Well-Being
And where nature can flourish for years to come. — Energy management

Household solar power generation and consumption will become efficient with AI.
Fully connected appliances and energy self-sufficiency with
renewables will be the new standards for every home.

Electric vehicles will serve as emergency batteries.
Homes will be ready for the unexpected for peace of mind.

Offices, too, will become healthier.
Electrical equipment will optimize workspaces to accommodate individual
workstyles and reduce stress.
Generative AI will help maintain supply chains even during disaster.

Landmarks will brighten everyday life. Theme parks and stadiums will
exhilarate using less carbon.
Happiness will be created around the world.

Electrical equipment that delivers [Well-Being] and [Energy management]
to everyone through eco-friendly, human-centered technologies.
It's the part of the Panasonic DNA that supports human infrastructure.

We won't give up today for the future,
nor give up the future for today.
With electrical solutions, we make both possible.





Message from the President

The Electric Works Company is in the business of providing innovative, people-centered electrical equipment for all of society's "life spaces," from homes, offices and hotels to commercial and sports facilities.

With solutions centered around digital technology and electrical equipment, we provide safe and comfortable spaces where everyone can live healthy and active lives.

We offer new ways to improve spaces, adapting to changes in lifestyles and the social environment to deliver the maximum satisfaction to customers.

Based on these aims, we work with leading partners to offer people-centered solutions.

We are in the business of bringing customers a better today and a better tomorrow through electrical equipment.

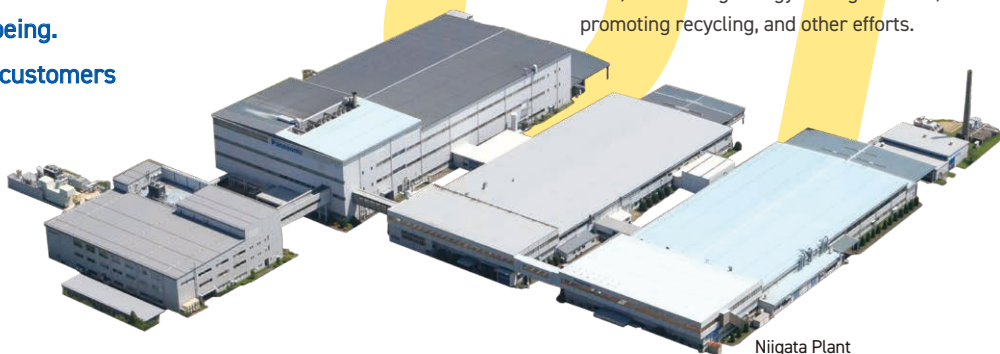
Kiyoshi Itahi

President
Electric Works Company
Panasonic Corporation



Action to make a good today and tomorrow!

Our goal is to keep people and the Earth healthy.
Electric Works Company maximizes sustainable value in two areas: energy and well-being.
We will continue to contribute to our customers in the future.



Niigata Plant
Zero CO₂ emission factory

Action!

Our plant achieved zero CO₂ emissions.

We achieved zero CO₂ emissions by enhancing our utilization of photovoltaic power generation and pure hydrogen fuel cells, introducing energy-saving facilities, promoting recycling, and other efforts.

*The efforts of our group for zero CO₂ emission plants refers to achieving virtually zero CO₂ emissions by combining the promotion of energy-saving technologies and improvement of productivity with the promotion of utilization of renewable energy, etc., and utilization of credits to offset CO₂ emissions derived from fossil fuels.

Renewable Energy Realizing RE100.

Generating renewable energy in Japan and overseas with Panasonic HX.

RE100 is a global initiative to supply 100% of the power consumed by business with renewable energy. Panasonic is leading the way in RE100 with Panasonic HX, which coordinates control of pure hydrogen fuel cells, solar cells, and storage batteries.

Action!



Cardiff, Wales (2024)



Munich, Germany (2025)



Kusatsu Plant H2 KIBOU FIELD (2022)



*This is a CG image representing Panasonic HX. The facility depicted does not exist. The image is for illustrative purposes only and does not reflect the actual plant for carbon-neutral equipment.



HARUMI FLAG

Action!

Providing next-generation energy to HARUMI FLAG, an environmentally advanced city.

With HARUMI FLAG as an example, we contribute to environmentally advanced cities by supporting the utilization of pure hydrogen fuel cells and photovoltaic power generation as well as energy management.

Action!

04

Reducing CO₂ emissions with LED lighting while dazzling tens of thousands of people.

High energy efficiency, comfortable playing environments, and dramatic illumination patterns — we realize them all. We support dazzling settings involving tens of thousands of people with LEDs.



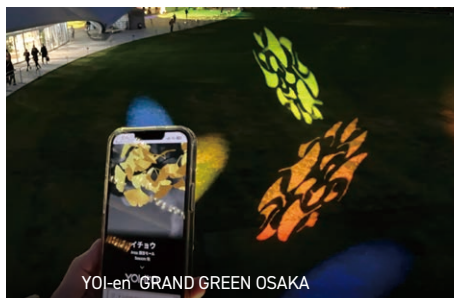
ES CON FIELD HOKKAIDO



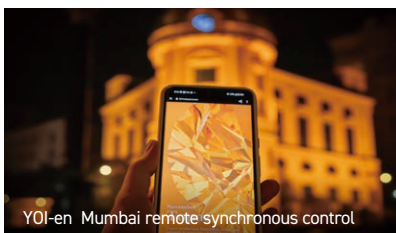
JIS (overseas)



Hanshin Koshien Stadium



YOI-en GRAND GREEN OSAKA



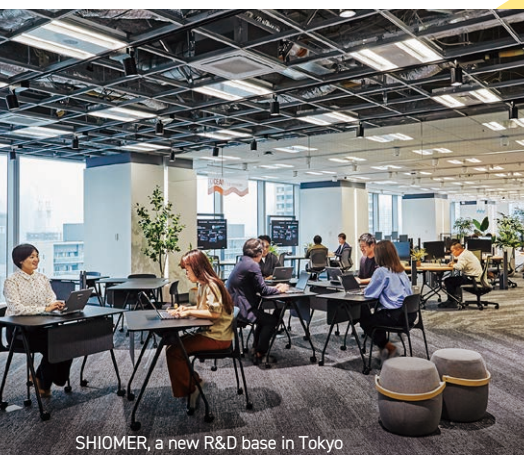
YOI-en Mumbai remote synchronous control

Action!

05

Providing excitement to cities around the world with participatory lighting.

Area lighting is dynamically controlled with cloud technology. Visitors can also participate in the creation of illumination patterns with their smartphones to enjoy new sights and experiences.



SHIOMER, a new R&D base in Tokyo

Action!

06

Opening a next-generation technology verification and co-creation base.

We verify coordinated control of lighting, air conditioning, and audio; control algorithm development; and other advanced technologies by implementing them in spaces. They are shaped through discussions with customers and partners.

Action!

07

Realizing well-being in customers' offices. Also supporting the acquisition of certification.

From consulting to the acquisition of WELL certification, verification, and improvement, our expert staff provide comprehensive support for well-being in customers' offices.



Headquarters building, Okinawa Cellular Telephone Company



Action!

Realizing harmony with architecture and reduction of environmental impacts with electrical equipment.

We apply design concepts that consider not only beauty but also contribution to the environment to a variety of electrical equipment. We work on manufacturing and logistics in a consistent manner.

Archi Design

Action!

Supporting ZEH with advanced equipment. For energy self-sufficiency (Net Zero Energy House)

Photovoltaic power generation and storage batteries, energy management, energy-saving equipment, and various other equipment work together. They support "zero energy use" in houses.



Power station + Storage battery converter



Storage battery unit



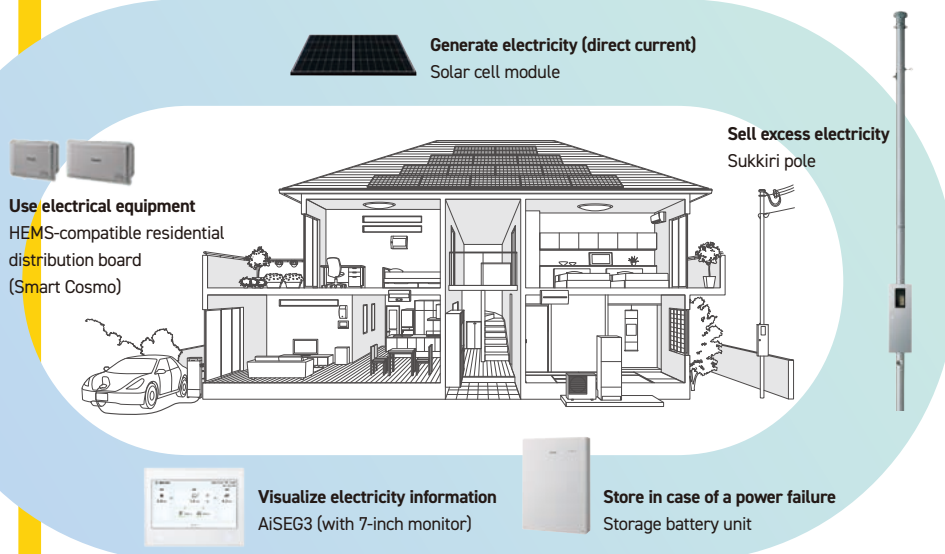
V2H stand



HEMS (AiSEG3)



Solar cell module



Action!

Remote monitoring of railway track flooding with AI cameras. Improving the efficiency of restoration work.

With the network in place, the causes of equipment alerts can be checked remotely. This reduces the time and effort for going to sites and supports swift restoration.



Remote monitoring of rainwater drainage pumps along railway tracks that are frequently flooded

Action!

Increasing production of electric appliances in Asia. For improvement of local life.

In rapidly growing Asian countries, such as India and Vietnam, we are increasing production of wiring accessories that are safe and pleasant to use. We contribute to the improvement of local life.



New, fully operational plant building in Vietnam



Cutting-edge plant for wiring accessories operating in India

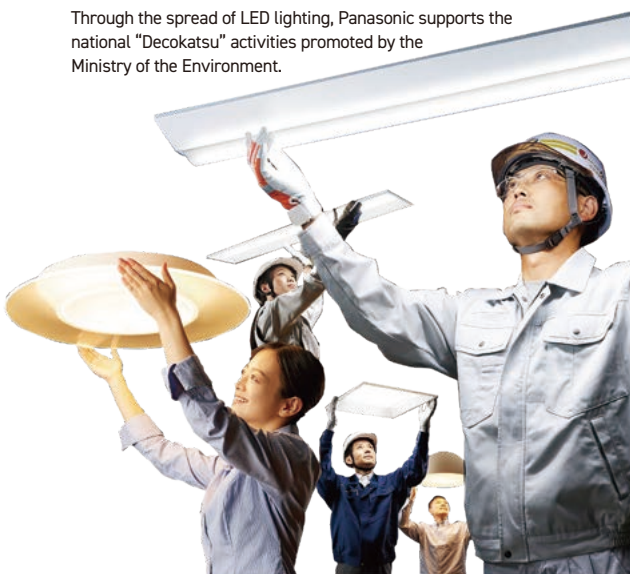
12 Action!

Fluorescent lamps will be discontinued. Contributing to the environment with high-quality LEDs.

Manufacturing, import, and export of fluorescent lamps will be prohibited by the end of 2027 in accordance with the implementation of an international treaty that restricts mercury. Panasonic responds to the need for alternatives with LEDs that are friendly to people and the environment.



Through the spread of LED lighting, Panasonic supports the national "Decokatsu" activities promoted by the Ministry of the Environment.



13 Action!

Lightening the load and saving time. Solving on-site issues.

We conduct in-depth investigations of worksites for electrical work and suggest measures. We provide solutions with a variety of technologies and ingenuity, such as the simplification of construction techniques, weight reduction of tools, and use of existing facilities.

"Hayawaza" renewal by Panasonic

Reduction of construction time

LED
ER/DN series

Reduction of workload

Wall-mounted
heat exchange
ventilation system

Diversified electricians

Life battery
e-block



14 Action!

Also renovating plants into well-being work environments.

Turning manufacturing sites, which tend to be impersonal, into warm, comfortable spaces. We strive to create well-being work environments to increase job satisfaction.



Improvement of plant tours throughout Tsu Plant

15 Action!

Holding Tokyo Disney Resort® and professional baseball events for employees.

We hold a variety of events, including an employee event at Tokyo Disney Resort® and a professional baseball "Panasonic Eco Night Game" sponsored event.



©Disney

Panasonic is an official sponsor of Tokyo Disneyland®/Tokyo DisneySea®.



Eco night game

16 Action!

The top American football team in Japan! Outstanding CI sports.

The Impulse won the championship in Japan for the first time in 9 years.

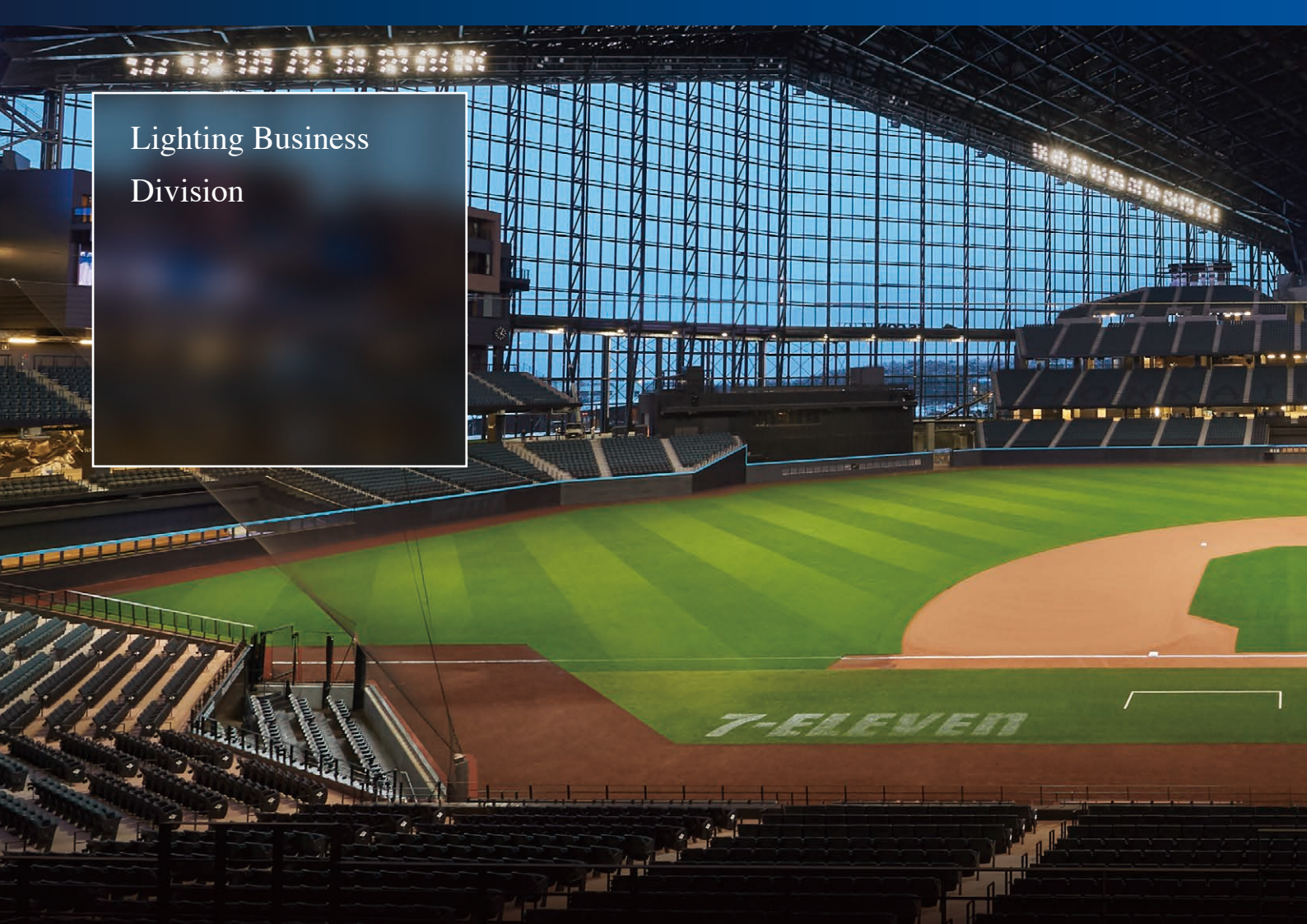
In volleyball, the Bluebells won their 10th consecutive V9 Champ League title. Also, the Kendo Club and other clubs showed outstanding performances, uniting the hearts of our employees.



The Panasonic Impulse won the championship in Japan for the first time in 9 years.



Lighting Business Division



Lighting Business

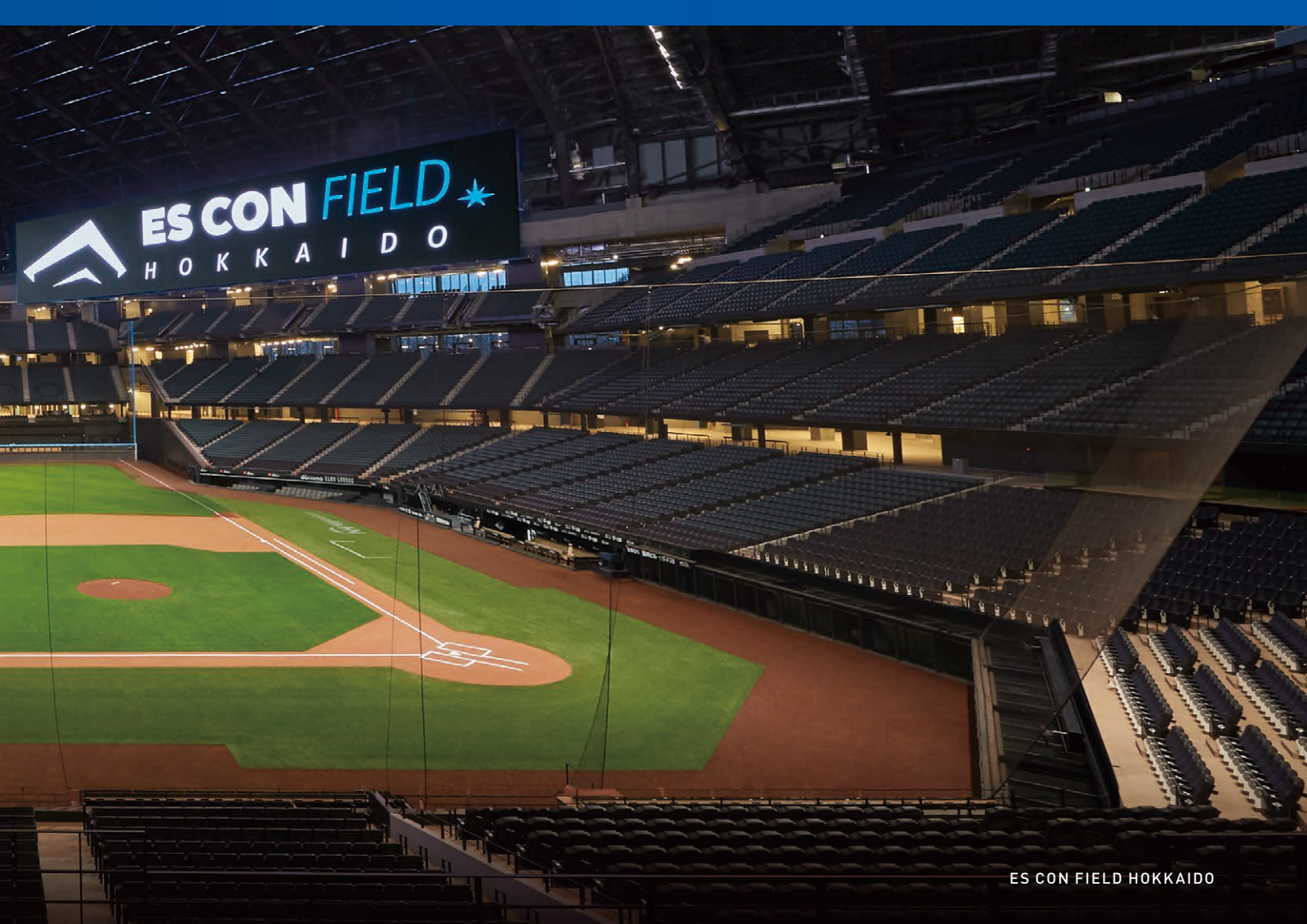
We respond to the diversifying needs of customers for their residences, offices, and other facilities and realize both Enriches the Heart and an ecological balance with the power of lighting. We will further pursue energy savings, longer life spans, durability, designability, and other aspects of lighting performance and provide a rich life that is more comfortable and safer while being a close partner for people.



LED Base Luminaire
iD Series



LED replacement
Lighting equipment compatible with compact lamps



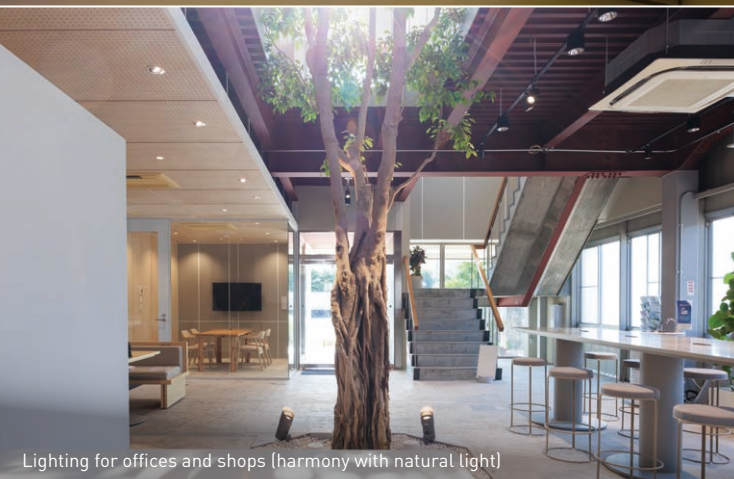
ES CON FIELD HOKKAIDO



Lighting for residential use (night)



Lighting for offices



Lighting for offices and shops (harmony with natural light)



Outdoor lighting

Electrical Construction Materials & Living Energy Business Division



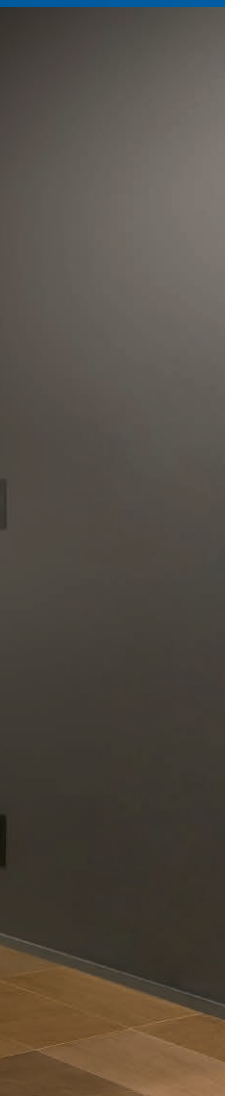
Electrical Construction Materials Business

Since our foundation, we have been a close partner in people's lives and supported safe and secure lives. In the future, we will continue to contribute to comfortable and sustainable life using IoT and equipment control, in addition to safety and security, through a wide range of power distribution and information infrastructure, including wiring devices, power distribution boards, conduit pipes, apartment intercom systems, and home systems.



Wiring devices
ADVANCE SERIES
LINK PLUS

*The image is for illustrative purposes only.



Wiring Devices - S0-STYLE series



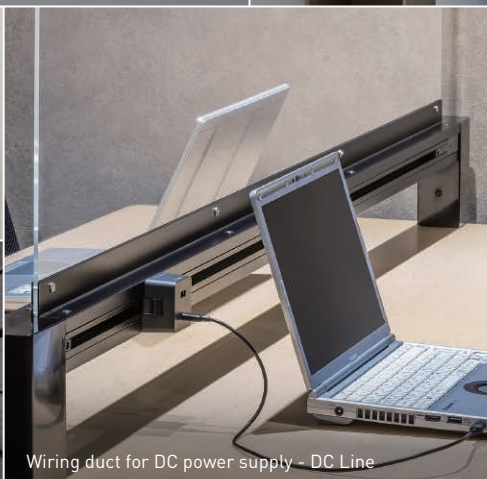
Home IoT - AiSE63



Residential power distribution board - FLEXIID



Apartment intercom system - AirEZ



Wiring duct for DC power supply - DC Line



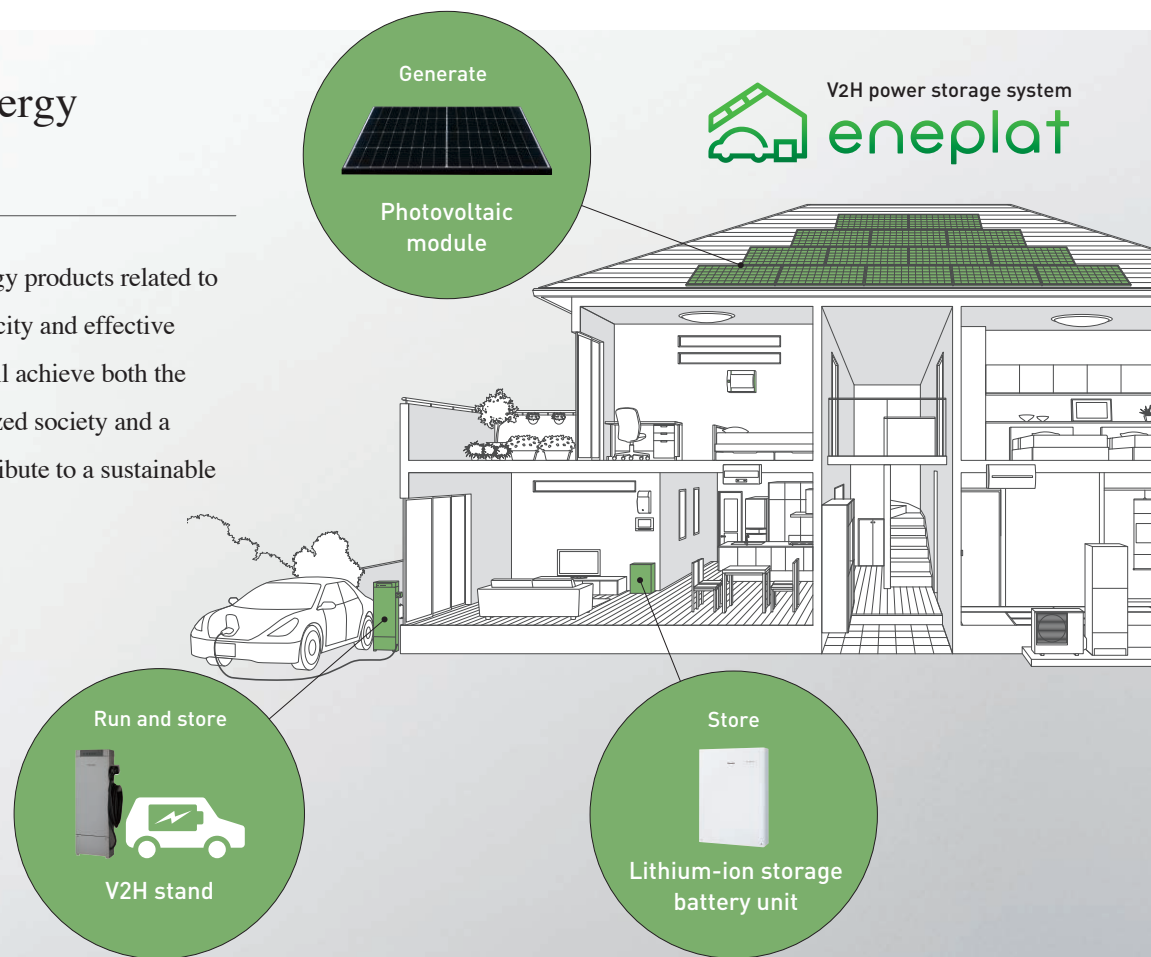
Power tools - EXENA + crimping attachment

Electrical Construction Materials & Living Energy Business Division



Sustainable Energy Business

With the best mix of energy products related to gas, hydrogen, and electricity and effective utilization of them, we will achieve both the realization of a decarbonized society and a comfortable life and contribute to a sustainable society.





Panasonic HX Kusatsu



Residential Fuel Cell CHP ENE-FARM



Pure hydrogen fuel cell systems



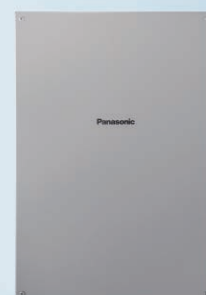
Ultrasonic measurement unit



Wireless Device



Ultrasonic Flow & Concentration Sensor for Hydrogen



Power conditioner

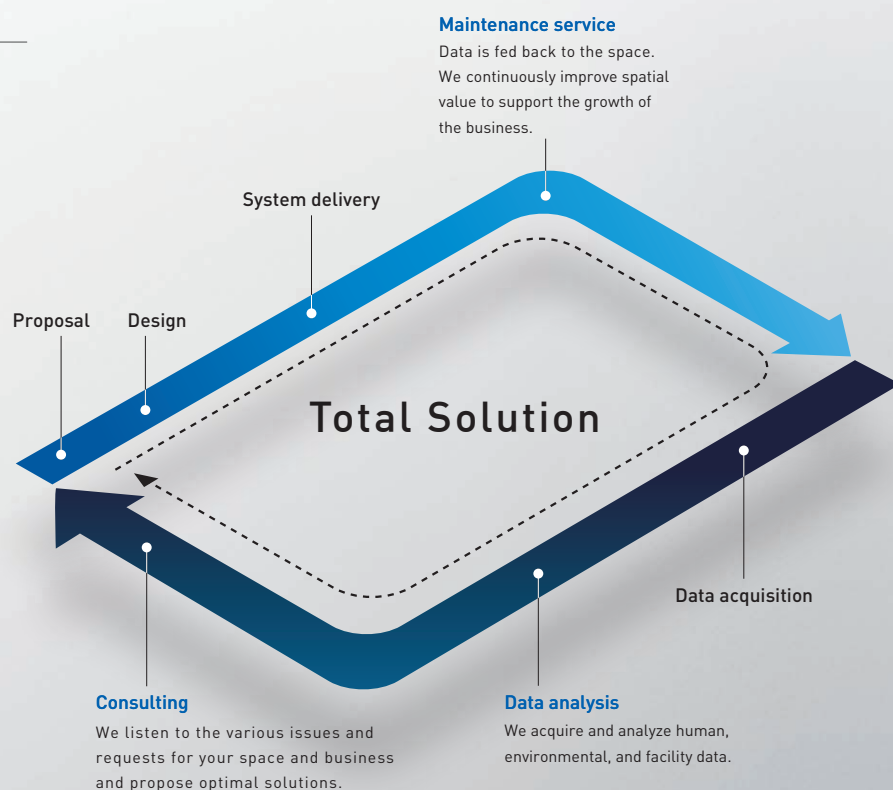
Solution Engineering Division



Solution Engineering Business

We provide solutions in the well-being and energy domains by linking hardware systems, consulting services, and engineering together with the aim of providing business solutions tailored to the needs of each customer.

We provide not only equipment but also total solutions including consulting, analyses of usage data, and operational improvements.





worXlab



ZEB • Well-Being



Efforts for energy solutions



Live office "worXlab"



Disaster prevention & security solutions

Network solutions



YOI-en

Manufacturing Bases and Major Delivery Examples in Japan

4 factories, 76 offices, and 34 affiliated companies in Japan *As of April 2025

Factories: 4 factories (Niigata, Tsu, Kusatsu, Nara)

Offices: 76 offices

Affiliated companies in Japan: 12 manufacturing companies, 22 sales and other companies

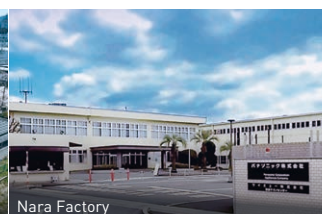
■ Factory 📍 Major delivery example



■ Lighting Business Division



■ Electrical Construction Materials & Living Energy Business Division



Sold in 101 countries and regions around the world, with 16 affiliated companies

Japan (non-consolidated) 9,000 people Total number of employees *As of April 2025

Japan (consolidated) 10,000 people

Overseas (consolidated) 12,000 people

31,000 people

United States

Solar systems, power tools

Europe/CIS

Power tools, security, disaster prevention systems

China/Northeast Asia

Lighting, wiring devices, power tools, breakers



Vietnam
Binh Duong factory
(began operating in 2024)

Europe

Turkey

South Asia

North Africa

Middle East

Southeast Asia

East Africa

India

Asia

Southeast Asia/Oceania

Lighting, wiring devices, breakers, conduit tubes

India/South Asia/Middle East/Africa

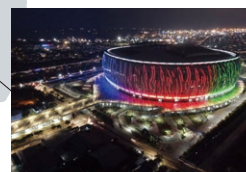
Solar systems, lighting, wiring devices, breakers, system equipment



India
Sri City factory
(began operating in April 2022)



India
Rudraksh International
Cooperation and Convention Centre



Indonesia
Jakarta International Stadium



Turkey

We provide electrical equipment products that meet the needs of each country in Europe, the CIS, the Middle East, Africa, and other regions. We are expanding business with two brands: Panasonic and ViKO.



India

We conduct business with a wide range of products, such as wiring devices, breakers, lighting, ceiling fans, and kitchens. We are expanding business with two brands: Panasonic and ANCHOR.

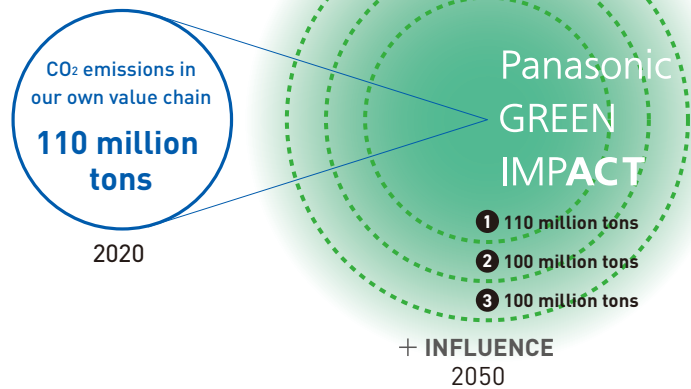


Vietnam

As a comprehensive electronic materials provider, we provide electrical construction materials that meet the market needs in Vietnam. In 2023, a new factory for wiring devices and breakers will start operating.

Panasonic GREEN IMPACT

Panasonic Group has established a long-term environmental vision, “Panasonic GREEN IMPACT,” to realize both a better life and sustainable global environment. In addition to reducing our CO₂ emissions, we are working to expand our contribution to CO₂ reduction in society and engaging in business activities to realize a circular economy in which resource efficiency contributes to decarbonization and reduces consumption of limited natural resources.



1

OWN IMPACT

Impact of emissions reductions in our own value chain

2

CONTRIBUTION IMPACT

Impact on society of the contribution of existing business to the reduction of emissions

3

FUTURE IMPACT

Impact on society of the contribution of new business/new technology to the reduction of emissions



We aim to achieve zero CO₂ emissions in all our factories around the world by 2030.

Toward the achievement of our environmental goals in 2050, we are promoting rigorous energy conservation at our manufacturing sites and aiming for zero CO₂ emissions in all our factories around the world by 2030 through the introduction of renewable energy, purchase of non-fossil fuel certificates, and other measures. By the end of FY2024, we will realize net zero CO₂ emissions in at least two factories, including our Lighting Business Division Niigata Factory (Tsubame City, Niigata Prefecture), and aim for zero CO₂ emissions in Scopes 1 and 2.



With pure hydrogen fuel cell integrated control, we will cover the energy consumed in business activities with 100% renewable energy.

Electric Works Company reduces CO₂ emissions through energy conservation and energy management for electrical equipment. With energy solutions that utilize hydrogen, collectively known as "Panasonic HX", we deliver technologies to society for such things as cooperative control of pure hydrogen fuel cells, photovoltaic cells, and rechargeable batteries and effective use of thermal energy generated during hydrogen power generation.

History of Electric Works Company

1918 - The history of Panasonic started with one wiring device (attachment plug).

We would like to introduce the history of Electric Works Company, which extends more than 100 years to the present day.

Established a conduit manufacturing company, Thai Matsushita Electric Works Steel Co., Ltd. (presently Panasonic Electric Works Steel Thailand Co., Ltd.), in Thailand.

Established a sales company, Asia Pacific Matsushita Electric Works, Ltd. (presently Panasonic Electric Works Asia Pacific Pte. Ltd.), in Singapore.

Acquired Anchor Electricals Pvt. Ltd., which would be the base for our information equipment business in India.

Started to expand into overseas markets for devices for gas meter.

Jointly developed a residential fuel cell system for the European market with Viessmann Group.

Acquired ViKO, a manufacturer of wiring devices in the Republic of Turkey. Established Panasonic Eco Solutions Vietnam Co., Ltd. (presently Panasonic Electric Works Vietnam Co., Ltd.), in Vietnam.

ViKO changed its name to Panasonic Eco Solutions Turkey (presently Panasonic Electric Works Turkey). Acquired 100% ownership.

Anchor Electricals Pvt. Ltd. changed its name to Panasonic Life Solutions India Private Limited, (PEWIN Division) .

1918

Konosuke Matsushita established Matsushita Electric Housewares Manufacturing Works. Started production and sale of wiring devices.

1935

Spun off Matsushita Electric Corporation. Produced and sold wiring devices, synthetic resins, and conduit tubes.

1945

Change the company name to Matsushita Electric Works Co., Ltd.

1978

Started joint development of a gas microcomputer meter after a meeting between our founder, Konosuke Matsushita, and top management of a leading gas company.

1987

1990

2001

Launched the Fuel Cell Commercialization Project.

2004

Matsushita Electric Industrial Co., Ltd. acquired additional shares of Matsushita Electric Works Co., Ltd. through a tender offer, making it a subsidiary. A comprehensive collaboration system was launched.

2007

2008

Changed the company name to Panasonic Electric Works Co., Ltd. Unified the name under the Panasonic brand.

2009

Started mass production of the ENE-FARM, the world's first residential fuel cell, in Kusatsu Factory.

2010

2011

Panasonic Corporation (presently Panasonic Holdings Corporation) acquired 100% ownership of Panasonic Electric Works Co., Ltd. and SANYO Electric Co., Ltd.

2012

Established Eco Solutions Company, an internal company responsible for electrical equipment business and housing construction material business.

2014

2016

Transferred the solar division of SANYO Electric Co., Ltd. to Eco Solutions Company.

2017

2019

Changed the company name to Life Solutions Company.

2021

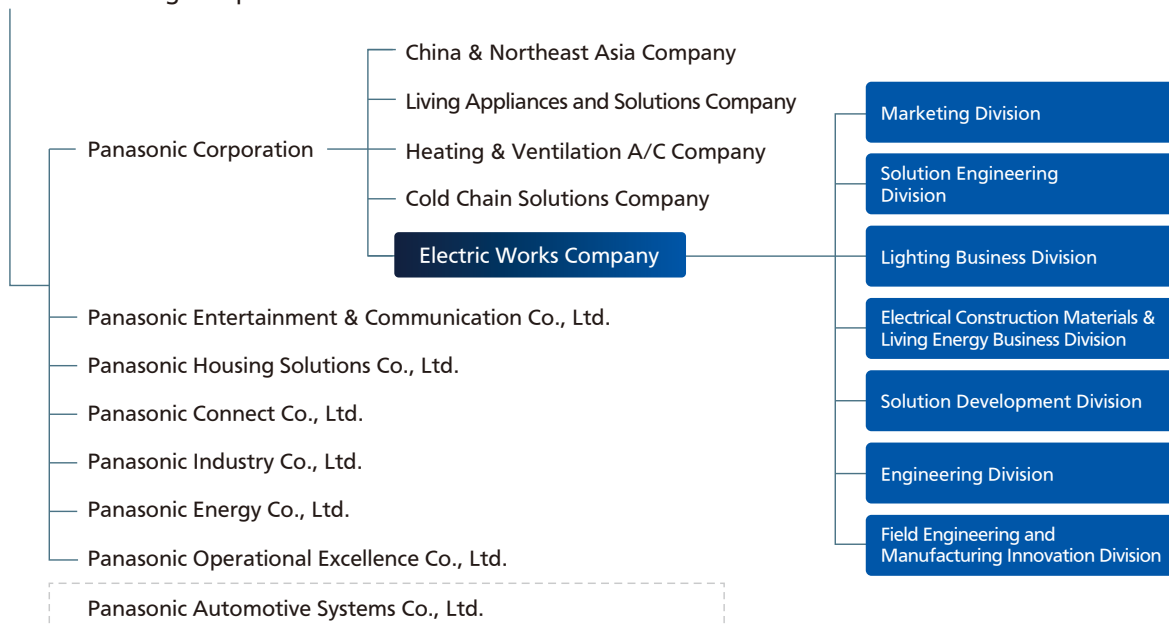
Established Electric Works Company as a spin-off responsible for electrical equipment business in the Living Business Division of Panasonic Corporation (presently Panasonic Holdings Corporation).

2022

Panasonic Group migrated to an operating company system. The Living Business Division inherited the trade name of the operating company of Panasonic Holdings Corporation, Panasonic Corporation, and Electric Works Company became a spin-off.

ORGANIZATION CHART

Panasonic Holdings Corporation



Panasonic Shiodome Museum of Art ROUAULT GALLERY

Enjoy encounters with art
that feel new, deep, and inspiring

Panasonic Shiodome Museum of Art opened in April 2003 as a part of the social contribution projects of Panasonic.

The Museum is home to a collection of almost 260 works by French artist Georges Rouault (1871-1958), which include paintings and some of his best-known prints from every stage of his career. These works are displayed in our permanent Rouault Gallery.

The Museum presents a variety of themed exhibitions that relate directly or indirectly to Rouault as well as the themes of “architecture and living spaces” and “design and applied arts.”

As an urban museum that takes advantage of the location Shiodome, Tokyo, we continuously work to enrich both the minds and lives of those who come to visit through contact with soul-stirring art by creating unique cultural spaces.

2024 exhibition contents



1

①Thermae: Ancient Rome, Japan, and the Joy of Bathing

②Poul Kjærholm: Timeless Minimalism – Masterworks from the Oda Collection

③La Belle Époque: Artists Gathered in Paris Featuring the Weisman & Michel Collection of Montmartre Art

④Le Corbusier: Synthesis of the Arts 1930-1965



Access the map
with QR



2



3



4